



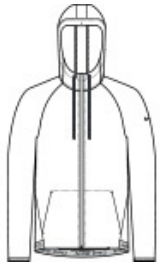
# Nike Pro Hooded Jacket NKFQ4761



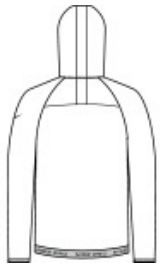
Developed for training and beyond, Nike Pro is all about feeling confident and doing your best. This breathable jacket steps up with Dri-FIT moisture management technology for optimal performance. Details include an adjustable hood, dyed-to-match draw cords, exposed dyed-to-match zipper, zippered front pockets and elastic cuffs. Navy/Game Royal has a contrast color hood panel. The contrast heat transfer Swosh logo is on the left sleeve. Includes a Nike Pro branded elastic back hem. Made of 3.5-ounce, 80/20 polyester/elastane Dri-FIT fabric with at least 75% recycled content.

### CARE INSTRUCTIONS

Wash With Like Colors. Do Not Use Softeners. Remove Immediately. Do Not Allow To Lay On Itself When Wet.



front



back

### HOW TO MEASURE



#### CHEST WIDTH

Measure under the arm and around the fullest part of the chest with arms down, keeping tape horizontal.

### SIZE CHART

	XS	S	M	L	XL	2XL	3XL	4XL
Chest	32-35	35-37 1/2	37 1/2-41	41-44	44-48 1/2	48 1/2 -53 1/2	53 1/2 - 58	58-63

### COLOR INFORMATION



Anthracite  
PMS 446C



Black  
PMS BLACK C



Navy / Game  
Royal  
PMS 533C